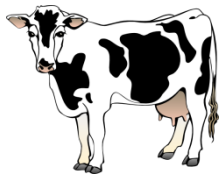
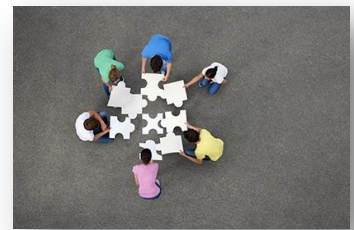


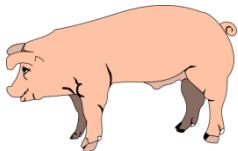
The **SEGRA** 2015-16 Challenge



1. How Might We Respond to Carbon in the Real World?

Challenge Leader:

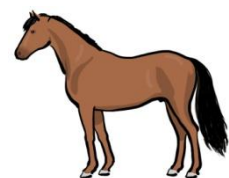
Gerry Morvell, Chair,
Conservation Volunteers and Chair, Wetlands Australia



2. How Might We Create Diverse Regional Futures?

Challenge Leader:

Ashley Bland, Senior Manager - Environment, Skillset



3. How Might We Build Leadership for the Future?

Challenge Leader:

Kerry Grace, Director, Evolve Network



4. How Might We Deliver Good Governance in Regional Australia by 2050?

Challenge Leader:

Simon Boughey, Chief Executive Officer,
Cherry Growers Australia and **SEGRA** National Steering Committee



5. How Might We Provide Secure and Safe Domestic Water for Rural and Remote Regions?

Challenge Leader:

Lara Wilde, Project Director, Northern Agriculture Development Scheme, Etheridge Shire Council



6. How Might We Develop Startup / Innovation Ecosystems in Regional Australia?

Challenge Leader:

Troy Haines, Start-Up & Innovation Coach, theSPACE Cairns

The Concept

Every day in regional Australia we are faced with challenges - How might we respond to..? How might we deal with..? How might we get better..? Equally we all have solutions - Why don't we.., Let's.., I know what might work. Based on crowd sourcing, **SEGRA** is providing delegates with a chance to tackle some of these challenges, to connect with like-minded others and to grow their ideas into masterful projects.

How Can You Find Out More?

To be part of these exciting challenges, please visit and read our posts on **SEGRA** LinkedIn. Don't forget to post your challenge and subscribe to future feeds. Already a number of challenges are up and running. Each challenge has a leader and is identified by an object for easy identification.

How Can You Participate?

- Add your ideas by writing on the posters supplied at each Challenge Station at the conference or add a longer document (if desired)
- Go to the **SEGRA** LinkedIn Group and add comments
- Have your say during the Challenge sessions on Tuesday afternoon at **SEGRA**
- Start your own Challenge Group. Please visit the registration desk to organise a spot

What Will Happen Next?

On Wednesday afternoon of **SEGRA**, each Challenge has the opportunity to pitch their idea to the whole conference. Delegates and a Judging panel will vote for a winner and a People's Choice Award. The winner at this year's conference will be offered a speaking role at **SEGRA** 2016 to present on the progress of their idea throughout the year.

The leader of the winning Challenge pitch will receive a complimentary registration to the **SEGRA** 2016 conference. There will also be runner-up prizes as well.



Join the **SEGRA** Group

on LinkedIn
[lnkd.in/bGhiKC3](https://www.linkedin.com/company/SEGRAau)



Join **SEGRA** Page

on Facebook
<https://www.facebook.com/SEGRAau>