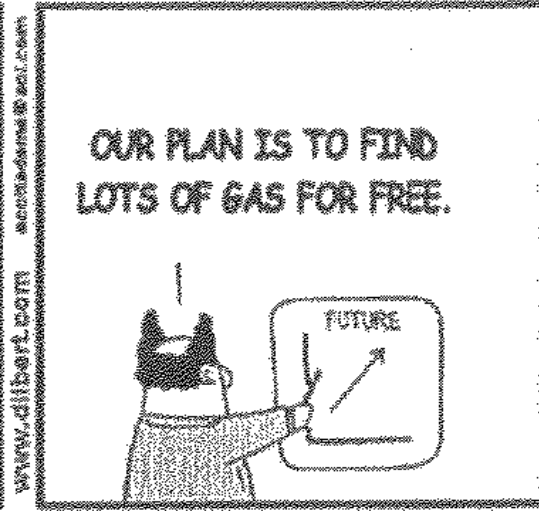
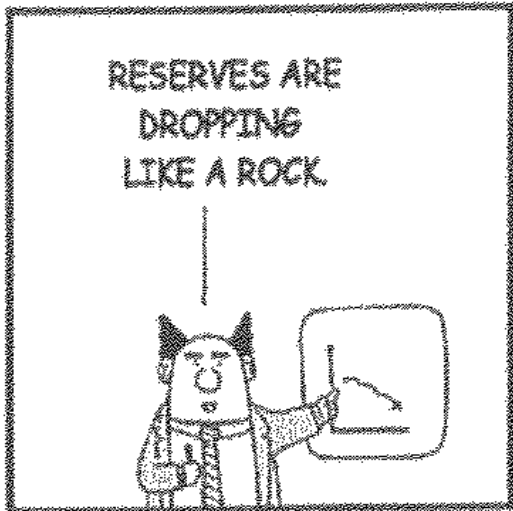




Department of Employment, Economic Development and Innovation

Regional Development in Queensland: Are we there yet?

Lisa Pollard
Manager, Rural & Regional Queensland



© UFD, Inc.

Queensland Makes A Good Case Study

- Most regionalised State
- Differential impacts of the GFC
- Growth in resource and energy development
- Stable in other parts of regional Queensland

So... Regional Development: Are we there yet?

- Yes, kind of
 - Bowen Basin, NW Minerals province, Surat Basin, Galilee Basin, Coastal Communities
 - Growing but there are lifestyle effects
- No, not quite
 - Many inland small rural communities
 - Stable or small decline, but positive outlook

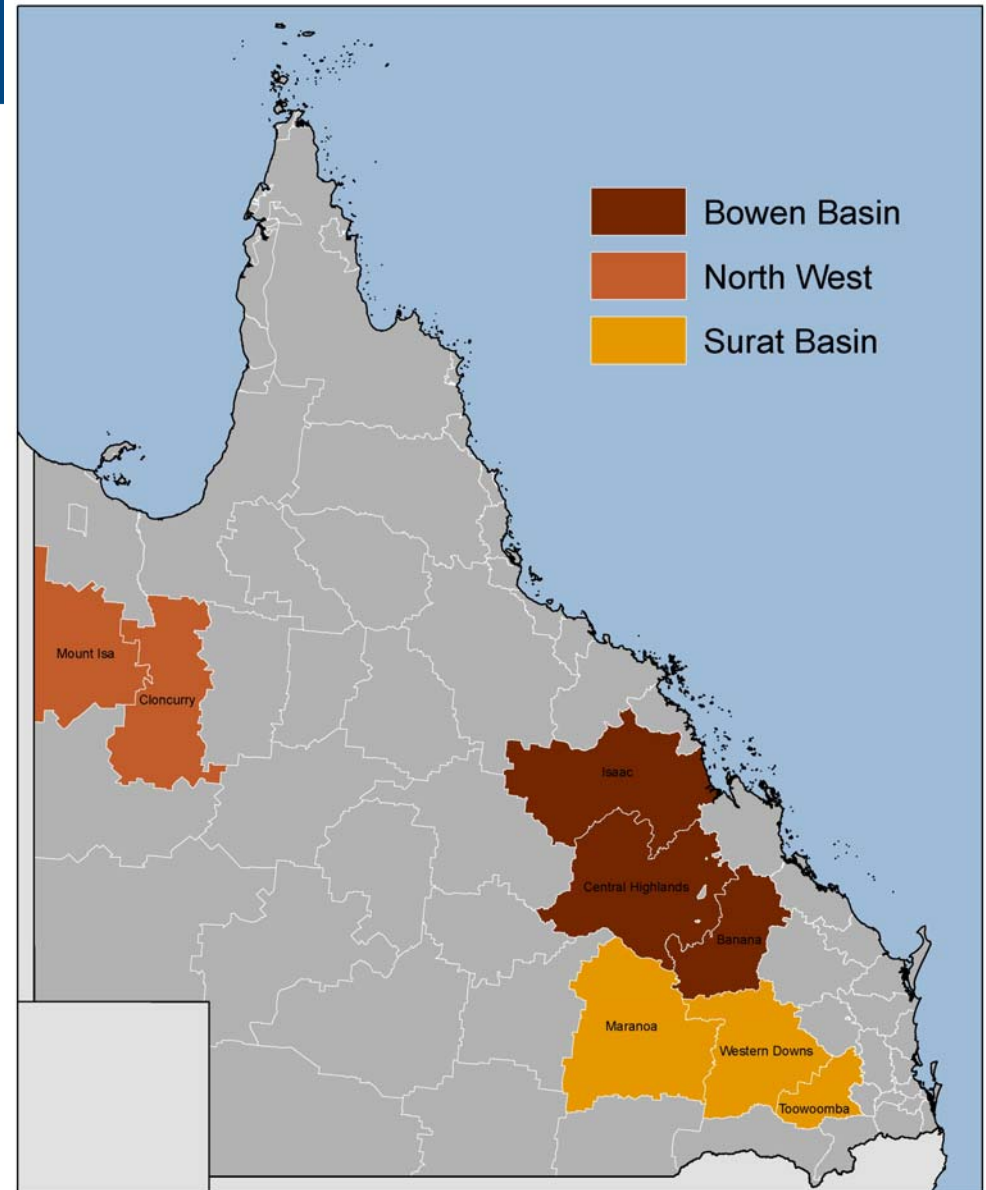
Today...

- Overview of Bowen and Surat Basins
 - Sustainable Resource Communities Policy
- Other Queensland policy responses
 - Regional Development Australia
 - Blueprint for the Bush
 - Centres of Enterprise
 - Queensland Regional Development Initiative

Sustainable Resource Communities

- Bowen Basin
- Surat Basin
- North West Minerals Province

Sustainable Resource Communities



0 50 100 200 300 400
Kilometers

Prepared October 2009 by the Department of Employment, Economic Development and Innovation.
© Copyright (2009) the State of Queensland through the Department of Employment, Economic Development and Innovation. Map Elements supplied by the Department of Environment and Resource Management, the Department of Infrastructure and Planning and the Department of Employment, Economic Development and Innovation.

Bowen Basin

- Located in Central Queensland
- Hosts 34 operational coal mines
- Produces over 100 million tonnes of black coal annually (Qld DIP, 2008b)
- A further 22 mines and 8 expansions were under development, as of July, 2008 (ISR, 2008)
- Information from DEEDI commissioned Report by Daniel Franks: forthcoming

Bowen Basin

- Local Government areas of Central Highlands, Isaac and Banana
- Serviced by 11 small and medium communities
- Total population of around 70,000
- Additional 10,000 non-resident workers in company accommodation (Qld DLGPSR, 2006).

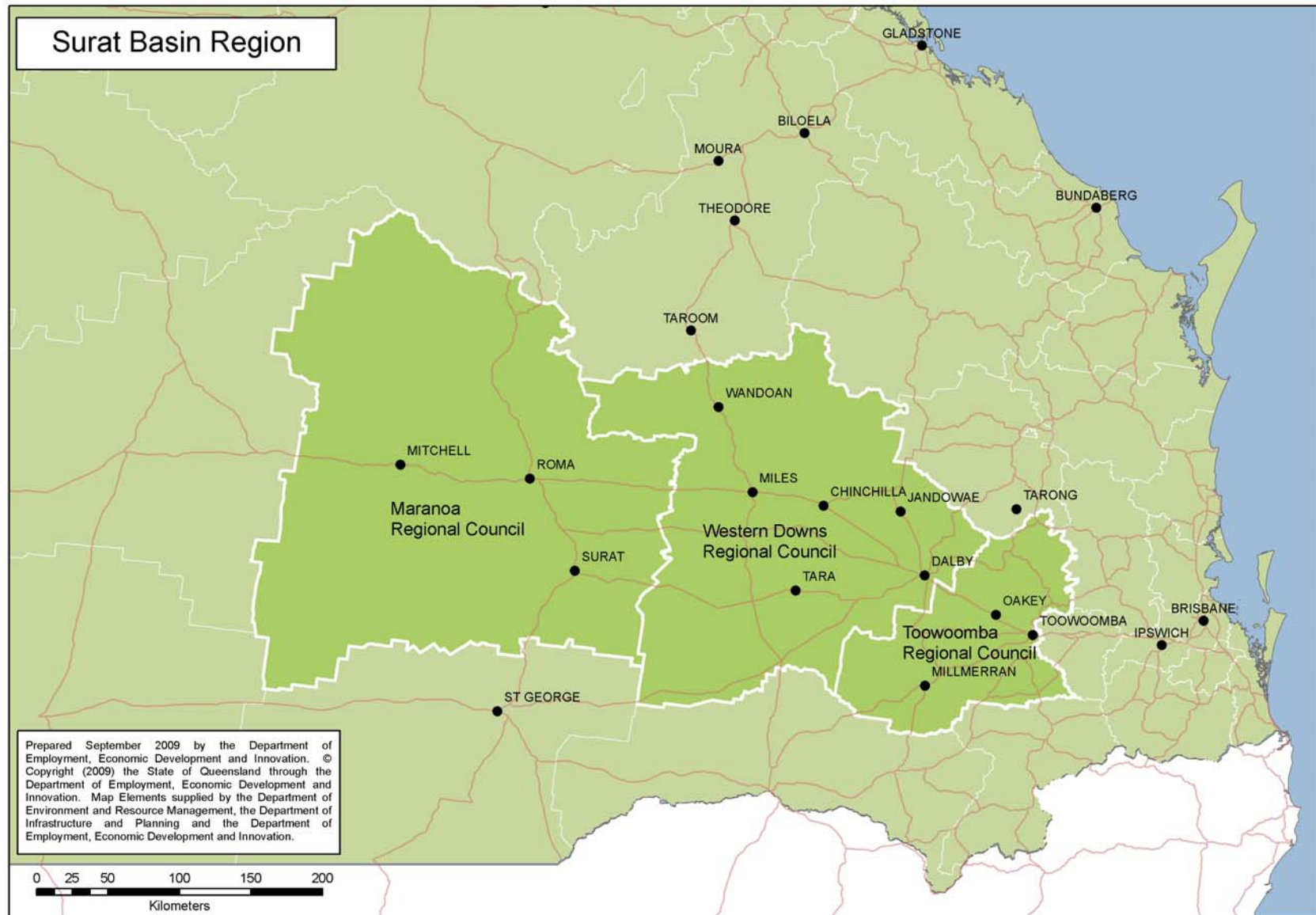
Bowen Basin

- Shortages in affordable accommodation and housing, e.g. rents in Emerald and Moranbah have been up to 95% more expensive than the state capital city of Brisbane (Rolfe et al. 2007)
- Skills shortages in trades
- Difficulty retaining staff in the non-mining sectors
- Pressure on community services such as child care, employment and skills training, local medical and dental services (Qld DIP, 2008b)

Bowen Basin

- Issues of concern:
 - maintenance of roads
 - disruption to agricultural enterprises from exploration activities
 - impacts of mining subsidence on flood plains

Surat Basin



Surat Basin

- Located in Southern Queensland
- Significant reserves of energy resources
- The four operating coal mines in the Surat Energy Resources Province (Commodore, New Acland, Wilkie Creek and Kogan Creek) produced 12.12 million tonnes of saleable coal during 2007-08 (Qld Mines and Energy)

Surat Basin

- Approximately 38.3 Petajoules (PJ) of coal seam gas produced in the Surat Basin (fiscal year 2007-08). Total remaining proved and probable gas reserves (excluding LPG) as at 30 June 2008 were 6453 PJ
- Local government areas of Toowoomba, Western Downs and Maranoa, with strong linkages through Banana to Gladstone

Surat Basin

- Toowoomba regional centre and 5-7 other small to medium townships nearby
- The region is anticipated to experience strong growth in non-resident workers
- The non-resident population at its peak in 2011 could be as high as 4,300 persons

Surat Basin

- Rapid growth has led to a tight labour market in the Darling Downs-South West region, which largely represents the Surat Basin.
- There is very little surplus labour, with a current unemployment rate of 2.0 per cent

Surat Basin

- Issues of concern:
 - Need to plan ahead for “Bowen Basin” effects
 - Concern about good quality agricultural land
 - Need major infrastructure to assist development
 - Want social infrastructure ahead of growth
 - Want to secure regional and local economic benefits from growth

Sustainable Resource Communities Policy

- Framework built on four key themes
- \$100M over three years for infrastructure
- Relies on communication and shared responsibility
- Policy available at <http://www.regions.qld.gov.au>

SRC Policy

Theme One

- Strengthening the State Government's Coordination Role
 - Social Impact Assessment unit
 - Social Impact Plans
 - Work on priority issues

SRC Policy

Theme Two

- Improved Linkages between Social Impact Assessment and Regional Planning
 - Regional Plans: potential to consider cumulative effects
 - Building land use planning capacity
 - Coal Infrastructure Strategic Plan

SRC Policy

Theme Three

- Fostering Partnerships with Governments, Industry and Community
 - Partnership Group (incl. work plan)
 - Leadership Groups: establishment led by Local Govt
 - \$100M: projects funded through Partnership Group
 - Liaison Officer appointed in Emerald

SRC Policy

Theme Four

- An Enhanced Regulatory Environment for Social Impact Assessment
 - Minor legislative amendment
 - Social Impact Plans: condition of approval
 - EIS trigger criteria

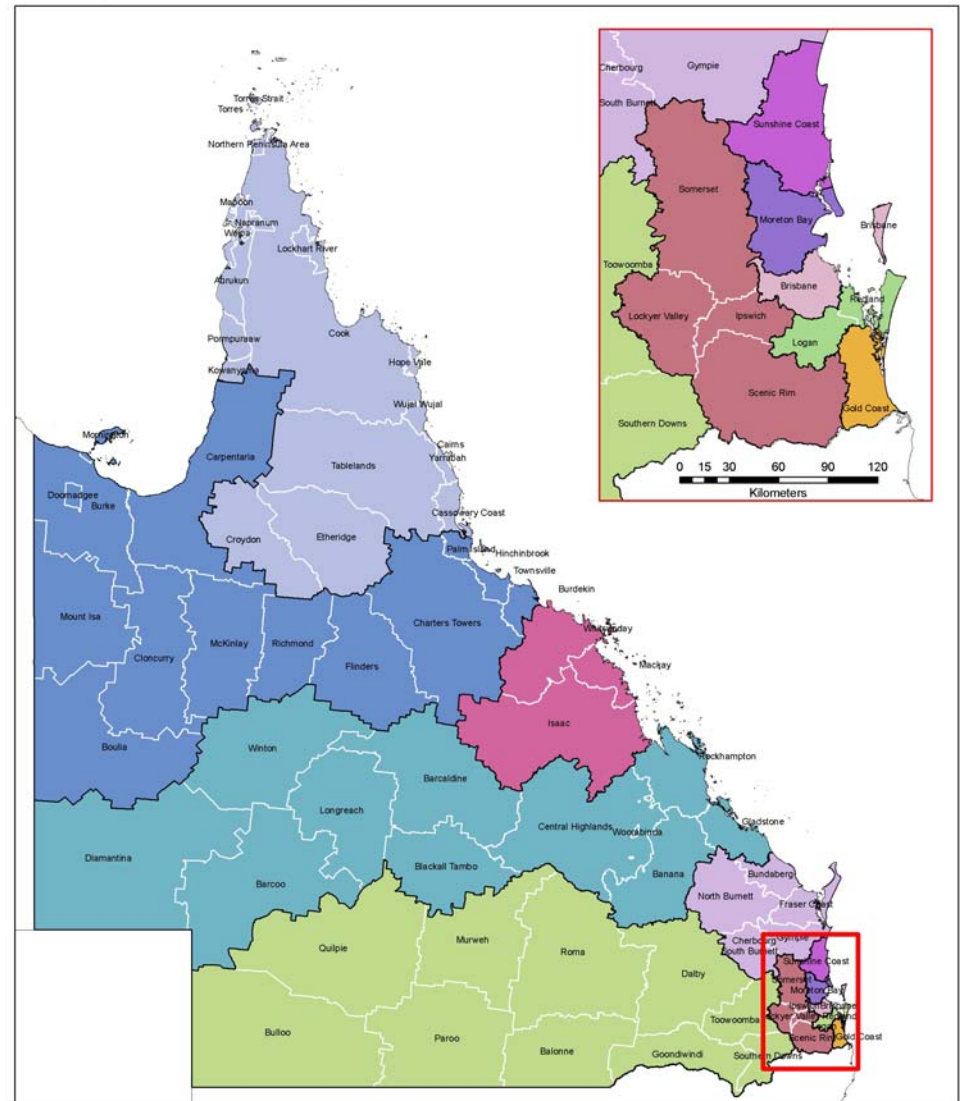
Regional Development Australia

- Partnership between the Australian, state, territory and local governments
- Develop, strengthen, ensure long-term sustainability of regional communities
- Consult with community, business, non-profit organisations, all levels of government
- Articulate local priorities, identify/align resources, engage stakeholders, promote solutions

Regional Development Australia

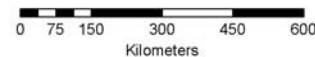
- In Queensland – 12 RDA Committees
- Committee members experienced in business, community and local government
- Selected through EOI process

Regional Development Australia - Queensland



RDA Regions

Moreton Bay	Fitzroy and Central West	Townsville and North West	Logan and Redlands
Darling Downs and South West	Gold Coast	Brisbane City	Sunshine Coast
Far North Queensland and Torres Strait	Mackay / Whitsunday	Ipswich and West Moreton	Wide Bay Burnett



Prepared 13 May 2009 by the Department of Employment, Economic Development and Innovation.
 © Copyright (2009) the State of Queensland through the Department of Employment,
 Economic Development and Innovation. Map elements kindly supplied by the former
 Department of Natural Resources and Water, Department of Mines and Energy and
 the Department of Infrastructure and Planning.

Regional Development Australia

- RDA Committees will provide:
 - Advice to government about regional issues
 - Strategic input into national and Qld programs
 - Provide information to communities on national and Qld initiatives
 - Contribute to regional planning and regional development initiatives
 - Links to other groups such as SRC leadership groups and Blueprint for the Bush

Blueprint for the Bush

- Engagement with rural and remote communities.
- Established in 2006, it is a 10-year whole-of-Government strategy in partnership with peak agricultural group AgForce
- Four primary goals: *sustainability* of primary production; *liveability* of rural and remote communities; *prosperity* for rural Queensland; and *strengthening planning, coordination and delivery* of services.

Blueprint for the Bush

- Blueprint for the Bush defines the ‘bush’ as all that area outside southeast Queensland, excluding major regional centres such as Townsville–Thuringowa and Gladstone. It includes communities west of the Great Dividing Range, Cape York, Torres Strait and small eastern communities.

Centres of Enterprise

- Focuses on each region's unique strengths and key opportunities
- Working with regional leaders on strategies to address: competitiveness, productivity, skills and training, investment attraction, innovation and technology diffusion, infrastructure needs
- Outcome: each region known for excellence in identified sphere of business

Centres of Enterprise

CoE Regions include:

- Cairns and Far North Queensland – Aviation Services, Tropical Expertise, Marine Services
- Townsville and North West Queensland – Mining & Mineral Processing, Tropical Science & Expertise
- Mackay Whitsunday – Mining Services & Technologies, Marine Services

Centres of Enterprise

CoE Regions include:

- Fitzroy and Central West Queensland – Manufacturing, Engineering & Industrial Services supporting Mining, Resources, Agribusiness
- Wide Bay Burnett – General Aviation and Unmanned Aerial Systems, Transport Equipment Manufacturing
- Darling Downs and South West Queensland – Food Processing, Industry Opportunities from Surat Energy Developments

Queensland Regional Development Initiative (QRDI)

- Delivers regional economic development projects through non-government Regional Development Organisations (RDOs)
- Engage and collaborate with regional stakeholders in actions promoting regional development
- Maximise value for taxpayer dollars by offering targeted support for services and projects delivered by RDOs

QRDI

Recipients of QRDI funding in 2009-10:

- Five Regional Economic Development Corporations –
 - Advance Cairns
 - Townsville Enterprise Ltd
 - Mackay-Whitsunday Regional Economic Development
 - Rockhampton Regional Development
 - Gladstone Area Promotion and Development Ltd

QRDI

Recipients of QRDI funding in 2009-10:

- Five Remote Area Boards –
 - Cape York Peninsula Development Association
 - Gulf Savannah Development
 - Mount Isa-Townsville Economic Zone
 - Remote Area Promotion and Development
 - South-West Regional Economic Development

So... Are we there yet?

- Great potential for continued strong regional development in parts of Queensland
- Need to ensure good partnerships with industry, community and different levels of government
- Focus on economic development, including lifestyle, as an attractor for skilled workforces and business investment