

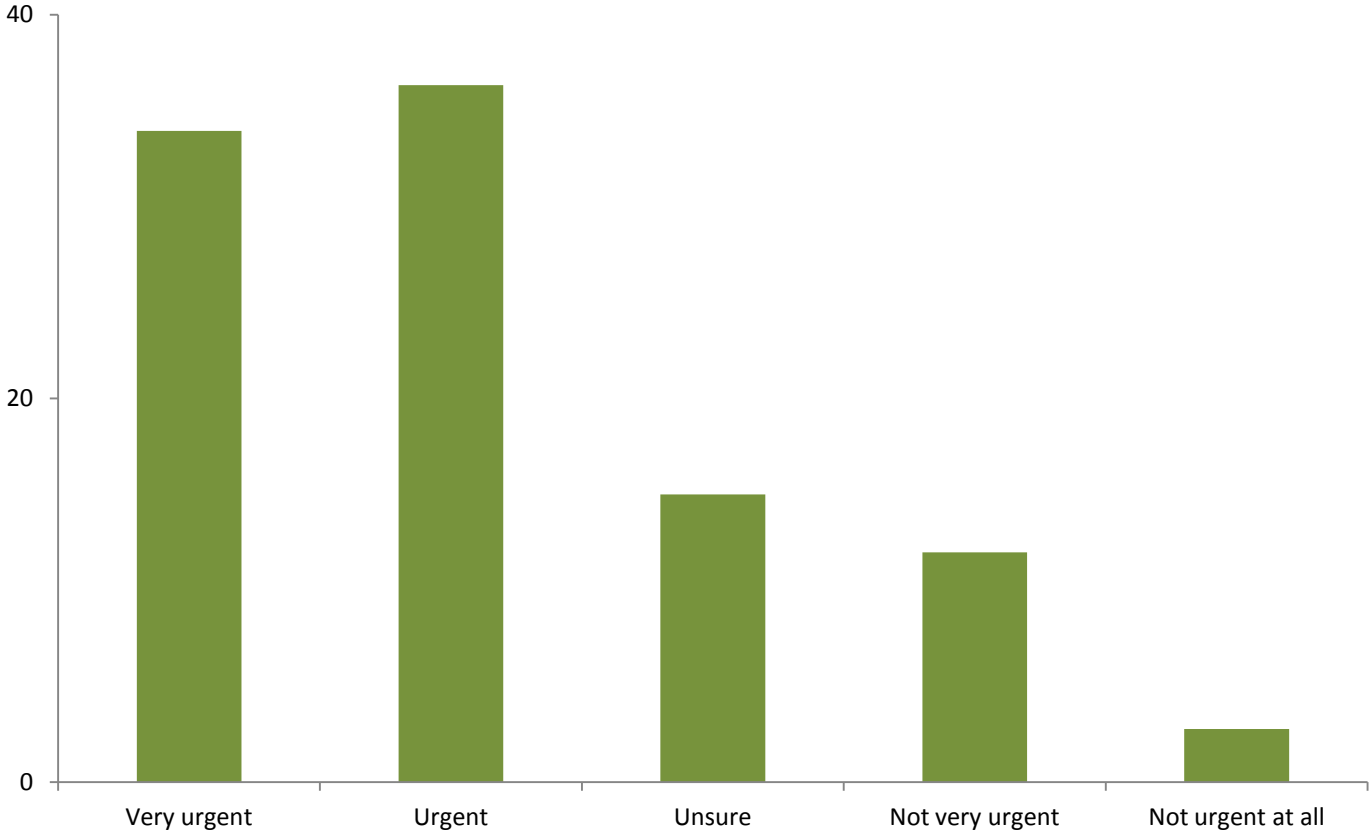
What do voters really think? *

Public opinion on primary industries and the environment, and election outcomes

Shaun Ratcliff | *Public Affairs Manager, Victorian Association of Forest Industries*

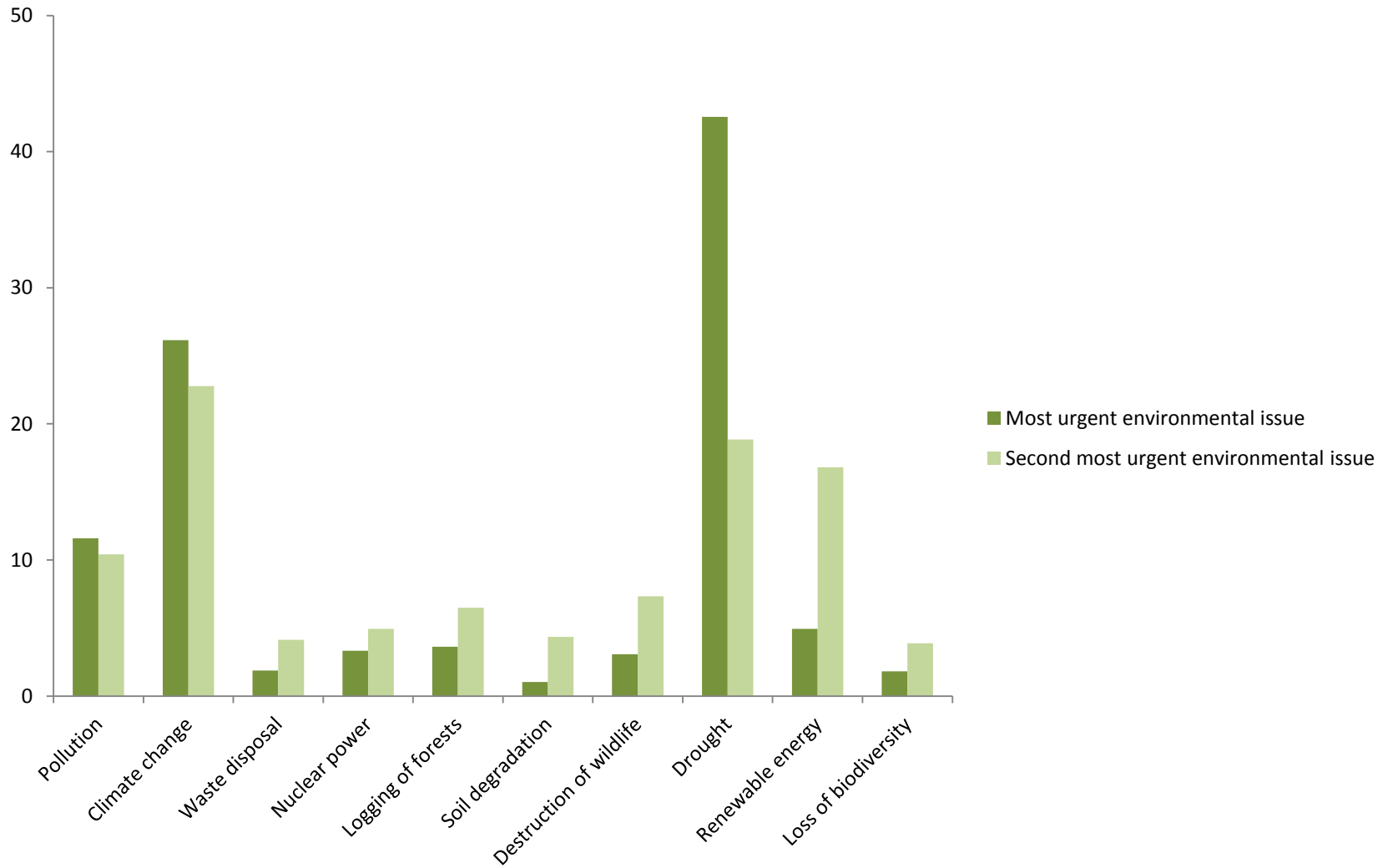
* **Disclaimer: this presentation is the work of the author and does not represent the views or policies of the Victorian Association of Forest Industries or its members.**

Figure 1 Urgency of issue: Logging of forests



Respondents perceived urgency of 'logging of forests' as an environmental issue, shown as a percentage of all respondents.
Source: Author's analysis of ASSA data, 2007.

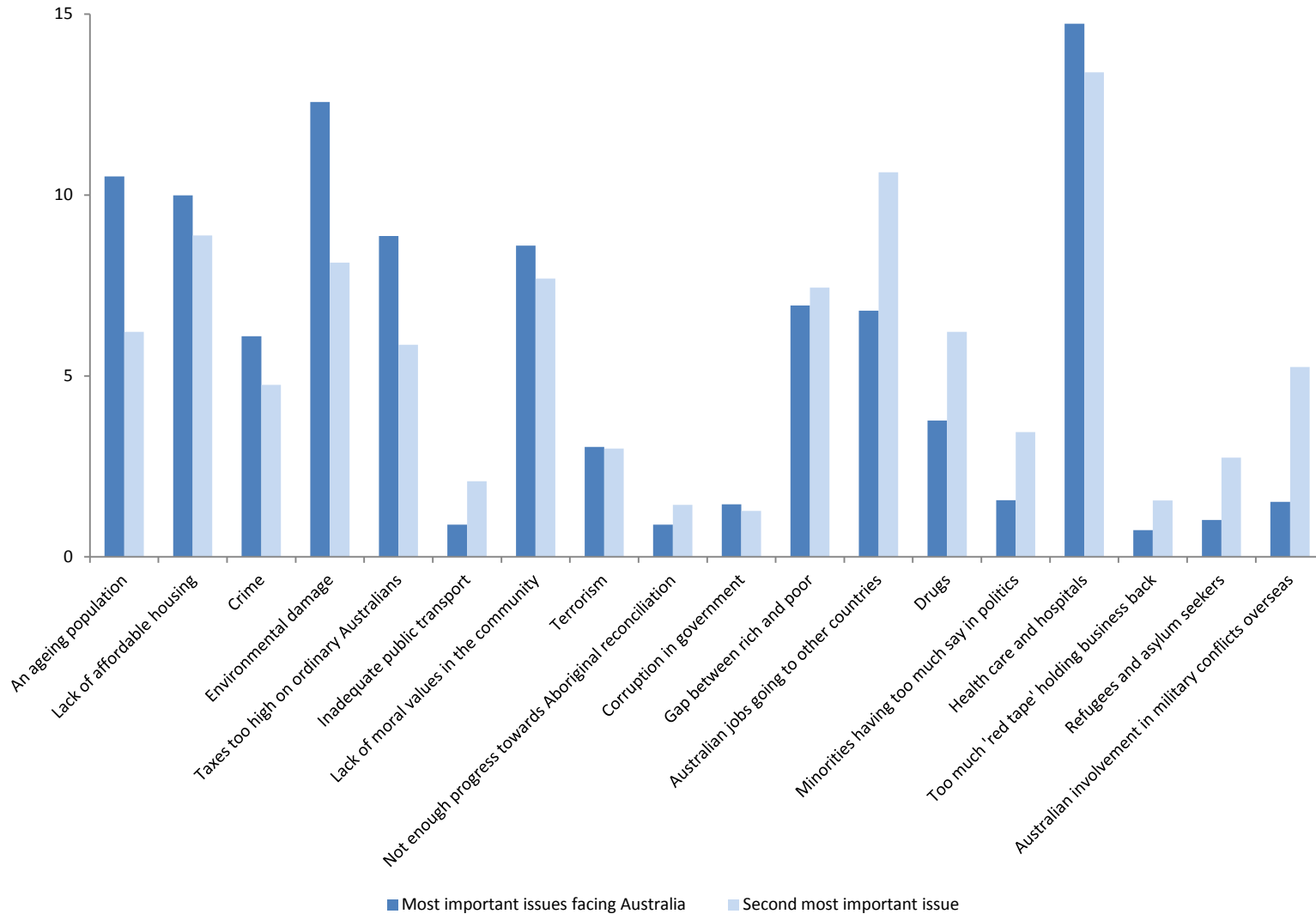
Figure 2 First and second most urgent environmental issues for respondents



Respondents' first and second most urgent environmental issues, shown as a percentage of all respondents.

Source: Author's analysis of ASSA data, 2007.

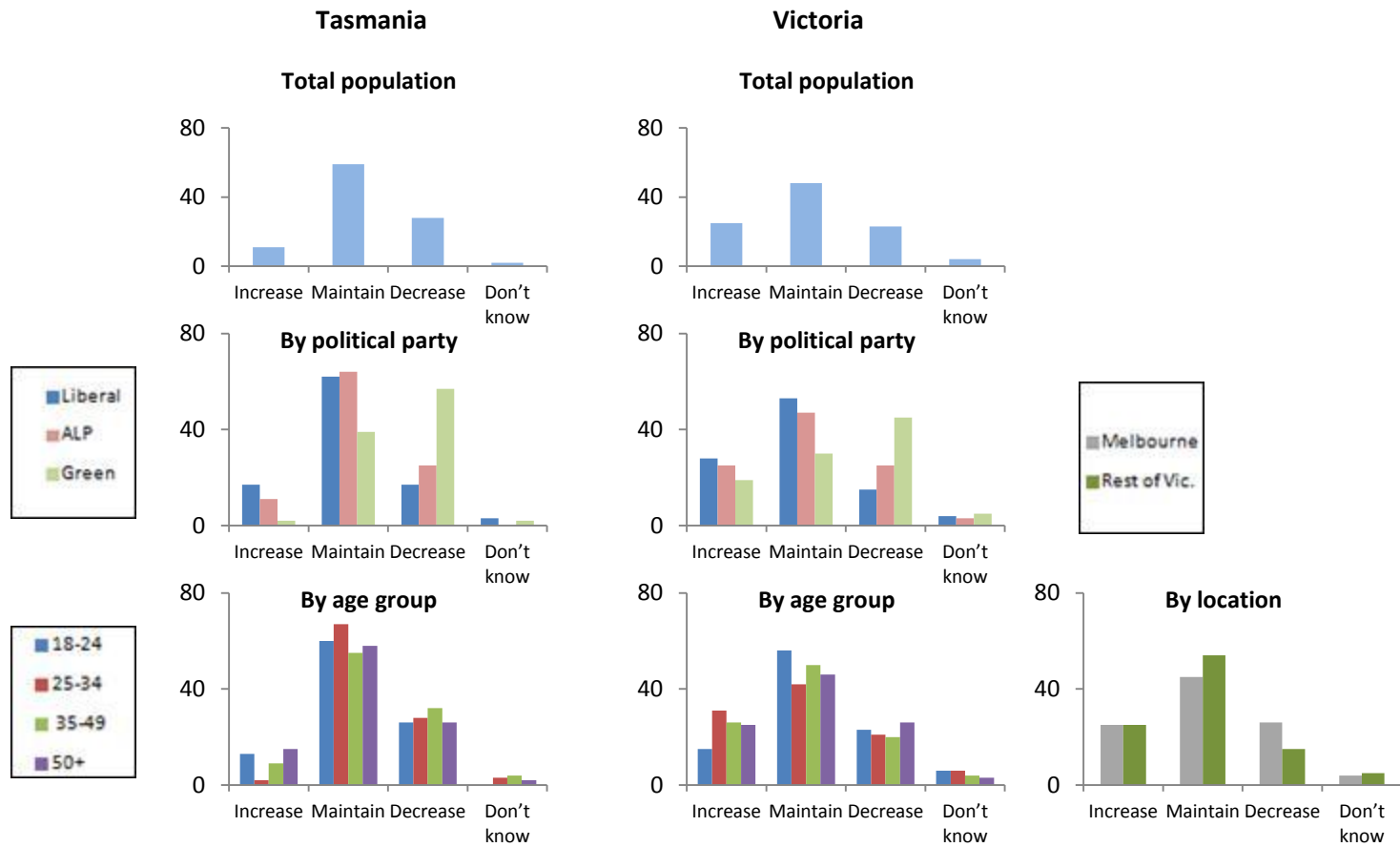
Figure 3 First and second most important issue facing Australia



Respondents' first and second most important issues, shown as a percentage of all respondents.

Source: Author's analysis of ASSA data, 2007.

Figure 4 Support for the current scale of forestry, by State

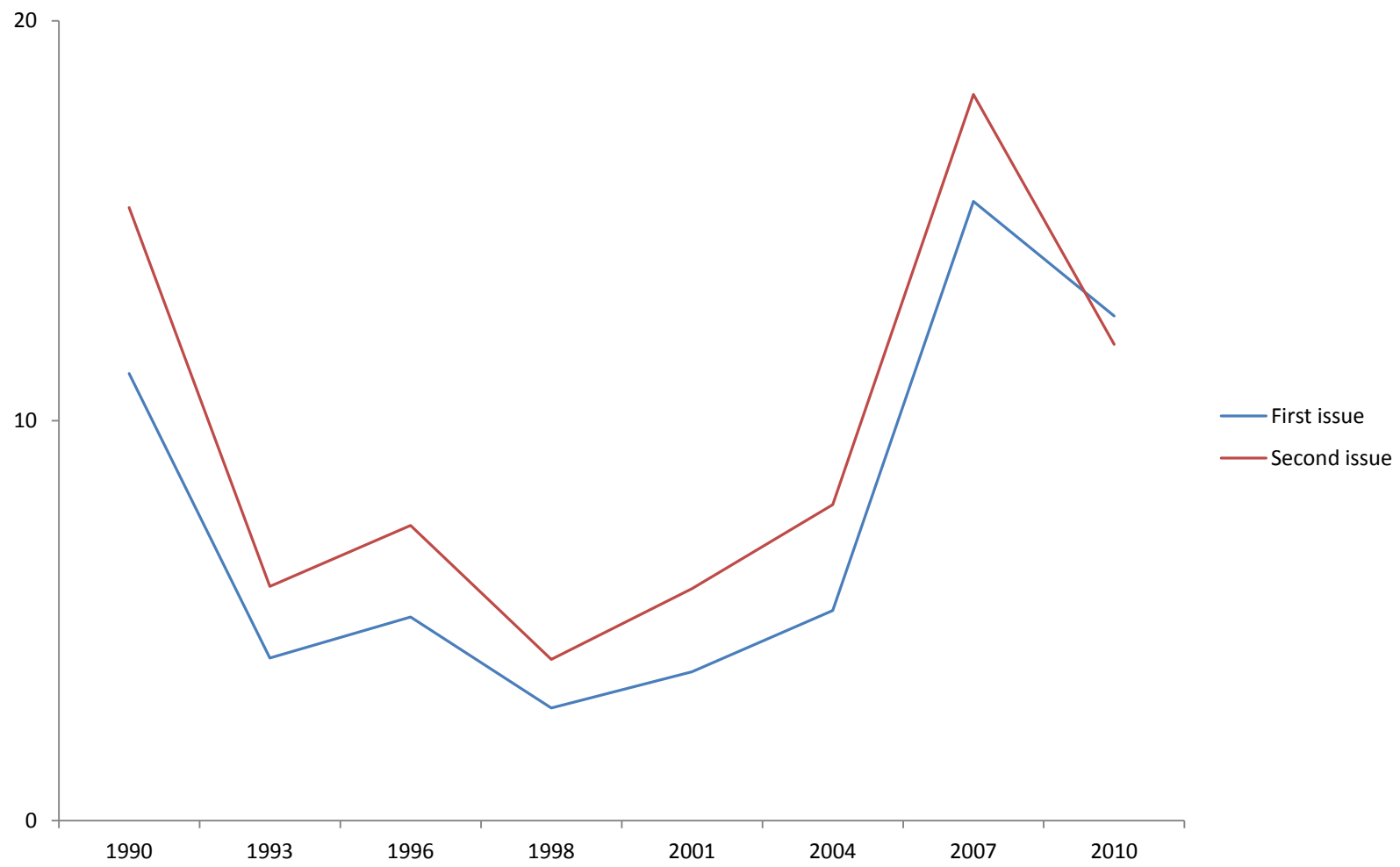


Percentage of voters believing scale of forestry in Tasmania and Victoria should be increased, maintained at current levels or decreased.

Source: Author's analysis of Galaxy Research survey data, 2010 (Victoria) and 2011 (Tasmania).

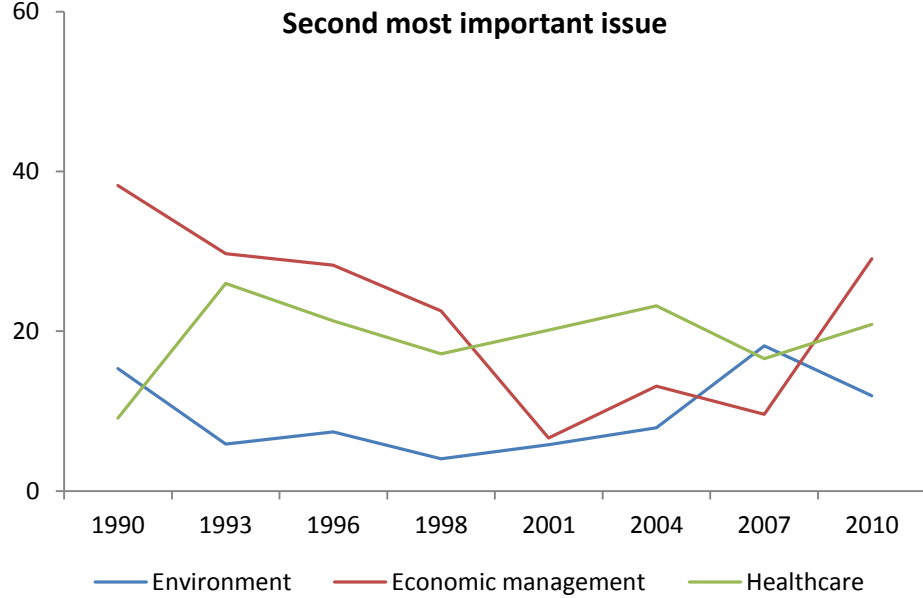
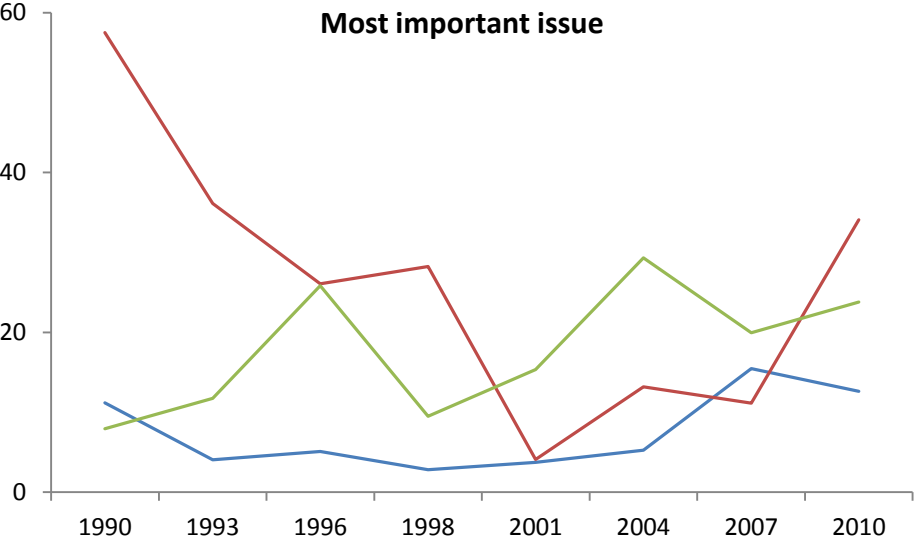
Note: For Victoria data labelled Liberal actually represents both Liberal and National Party voters.

Figure 5 The cyclical nature of environmental issue salience



Cross-sectional trend: the percentage of voters who reported the environment was the first or second most important issue to them.
Source: Author's analysis of AES data, 1990-2010.
Note: 2007 and 2010 data includes global warming, which was asked separately.

Figure 6 The most important issues to voters over time

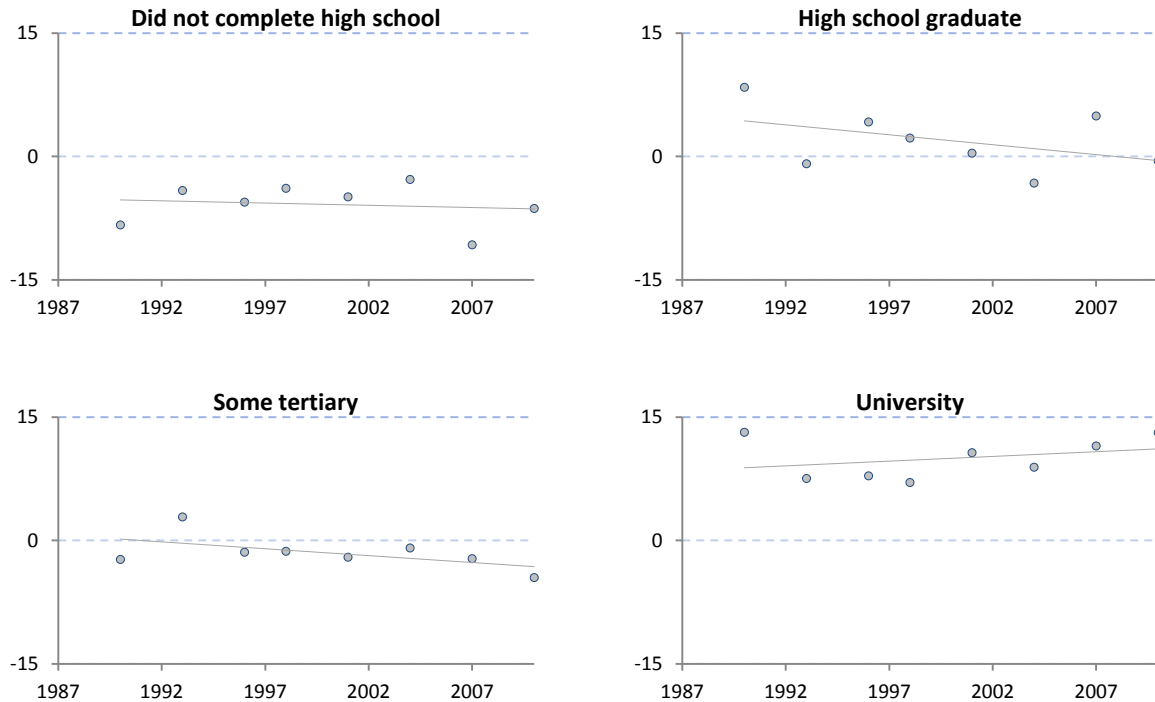


Comparisons of three key issues: the percentage of voters who reported the environment, economic management or healthcare was the most important or second most important issue to them.

Source: Author's analysis of AES data, 1990-2010.

Note: Economic management is the combination of a number of macroeconomic variables; 2007 and 2010 data for the environment includes global warming, which was asked separately.

Figure 7 Education and the importance of the environment as an issue

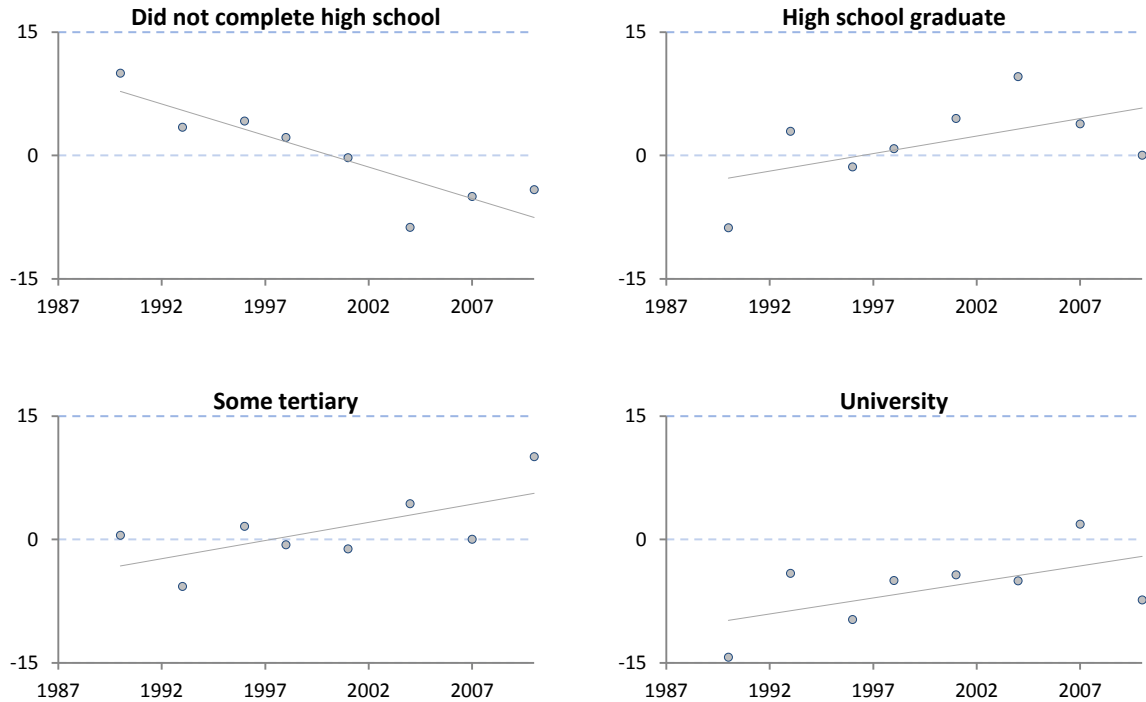


Cross-sectional trend: The percentage of voters by educational attainment that believed the environment to be the first or second most important issue, minus the percentage of all other voters that believed the environment to be the most important or second most important issue.

Source: Author's analysis of AES data, 1990-2010.

Note: 2007 and 2010 data includes global warming, which was asked separately.

Figure 8 Education and the importance of economic management as an issue

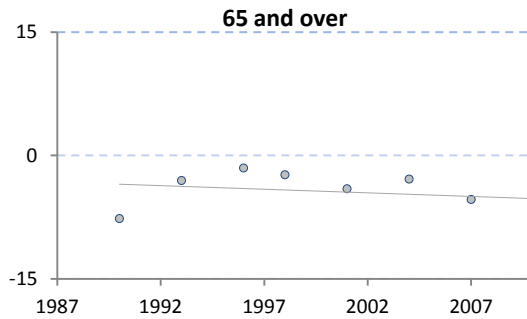
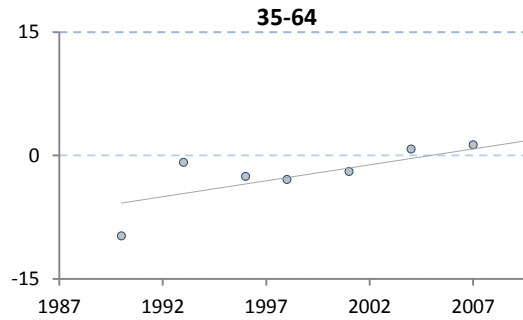
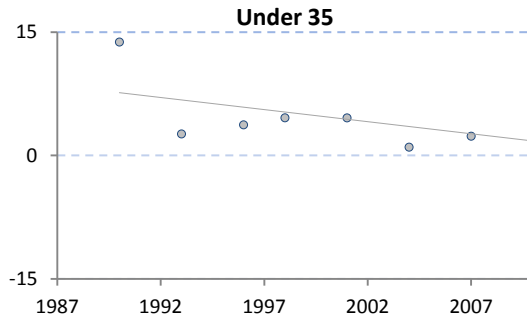


Cross-sectional trend: The percentage of voters by educational attainment that believed economic management to be the most important or second most important issue, minus the percentage of all other voters that believed economic management to be the most important or second most important issue.

Source: Author's analysis of AES data, 1990-2010.

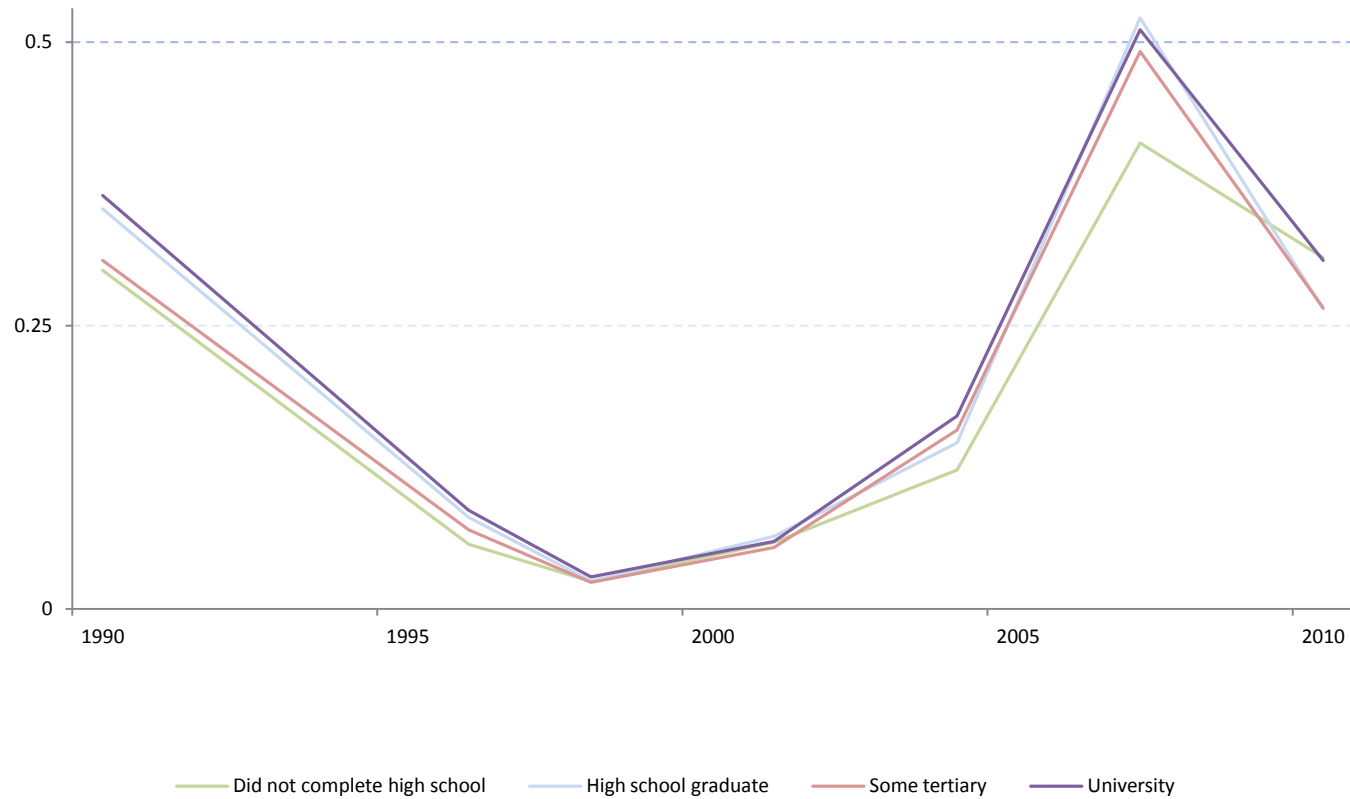
Note: Economic management is the combination of a number of macro-economic variables.

Figure 9 Age and the importance of the environment as an issue



Cross-sectional trend: The percentage of voters by educational attainment that believed the environment to be the first or second most important issue, minus the percentage of all other voters that believed the environment to be the most important or second most important issue.
Source: Author's analysis of AES data, 1990-2010.
Note: 2007 and 2010 data includes global warming, which was asked separately.

Figure 10 Education and the importance of the environment as an issue, controlling for age

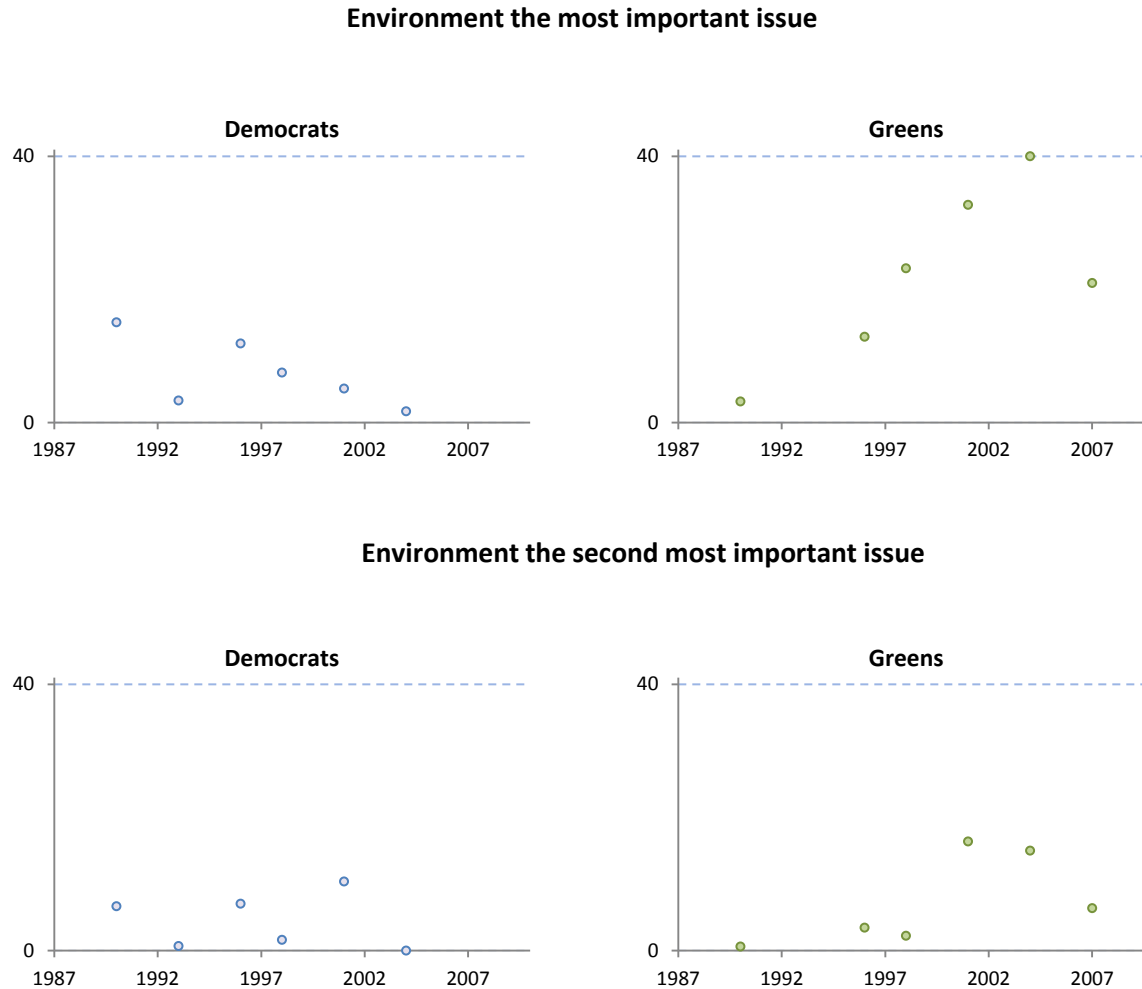


Cross-sectional trend: The predicted probability of voters to state they believe the environment to be the most important issue by educational, controlling for age.

Source: Author's analysis of AES data, 1990-2010.

Note: 2007 and 2010 data includes global warming, which was asked separately.

Figure 11 The importance of the environment as an issue and first preference vote

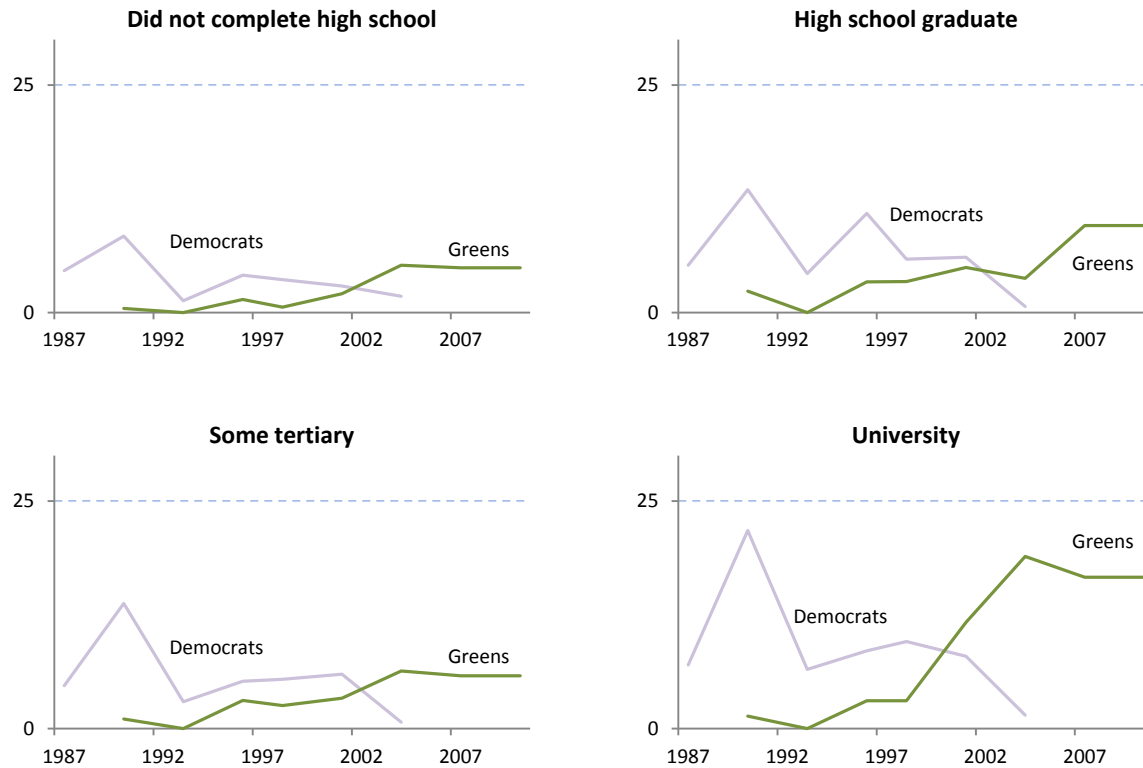


Cross-sectional trend: The percentage of voters that believed the environment to be the most important or second most important issue that gave the Democrats or The Greens their first preference vote, minus the percentage of all other voters that gave the Democrats or The Greens their first preference vote.

Source: Author's analysis of AES data, 1990-2010.

Note: 2007 and 2010 data includes global warming, which was asked separately.

Figure 12 Vote for the Australian Democrats and The Greens by educational attainment



Cross-sectional trend: The percentage of first preference votes received by the Australian Democrats and The Greens, by level of educational attainment.
Source: Author's analysis of AES data, 1987-2010.

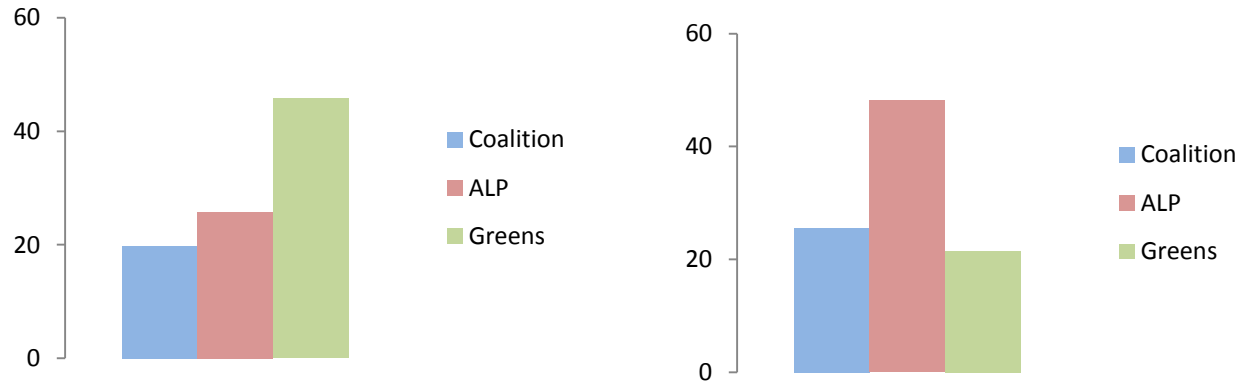
Figure 13 Vote for the Australian Democrats and The Greens by age



Cross-sectional trend: The percentage of first preference votes received by the Australian Democrats and The Greens, by age.

Source: Author's analysis of AES data, 1987-2010.

Figure 14 Percentage of first preference votes from those for whom the environment was the most important issue, 2004



The percentage of voters that in 2004 considered the environment to be the first and second most important issue that voted for the Coalition, ALP and Greens.
Source: Author's analysis of AES data, 2004.